

EXPLORING GREEK LIFE

The Journey  
Starts Here



# Table Of Contents

<b>Recruitment Schedule .....</b>	<b>8</b>	<b>Chapter Expectations .....</b>	<b>32</b>
<b>Panhellenic Information.....</b>	<b>10</b>	<b>Violation of Rules .....</b>	<b>33</b>
It's all Greek to Me .....	10	<b>How To File A Violation .....</b>	<b>33</b>
Greek Values.....	12	<b>Chapters .....</b>	<b>36</b>
Circle of Sisterhood .....	13	Alpha Chi Omega .....	36
Panhellenic Council .....	14	Alpha Delta Pi.....	38
Panhellenic Creed.....	16	Alpha Omicron Pi.....	40
Panhellenic Executive Board.....	18	Chi Omega.....	42
Rho Gammas.....	19	Delta Delta Delta.....	44
Bill of Rights.....	20	Delta Gamma .....	46
<b>TCU Panhellenic Recruitment at a Glance... 22</b>		Gamma Phi Beta .....	48
Breakdown of Days and What to Wear ....	22	Kappa Alpha Theta.....	50
<b>Things to Remember .....</b>	<b>26</b>	Kappa Kappa Gamma .....	52
<b>Recruitment Advice .....</b>	<b>27</b>	Pi Beta Phi.....	54
<b>FAQ .....</b>	<b>28</b>	Phi Mu.....	56
<b>Recruitment: How it Works .....</b>	<b>30</b>	Sigma Kappa.....	58
Mutual Selection .....	30	Zeta Tau Alpha.....	60
MRABA .....	30	<b>Other Councils.....</b>	<b>62</b>
<b>Recruitment Expectations .....</b>	<b>32</b>	<b>Stay Connected.....</b>	<b>64</b>
PNM Expectations .....	32	<b>Map .....</b>	<b>65</b>

Let the  
ADVENTURE  
begin







STUDENT  
AFFAIRS

Fraternity & Sorority Life

Dear Potential New Member,

On behalf of TCU Fraternity & Sorority Life, we would like to welcome you to the formal Panhellenic Recruitment process! We are very excited that you are interested in becoming a member of our extraordinary community. Our community prides itself on unity, living our values, and building better women. Our members are consistently some of the most involved women on campus while demonstrating a commitment to academic excellence, service and philanthropy, sincere friendship, leadership, and personal development.

Recruitment week will give you the opportunity to learn more about each of the 13 National Panhellenic Conference (NPC) organizations on our campus, along with the values they uphold while striving to elevate our greater community. The formal recruitment process is rooted in both Panhellenic and TCU spirit, allowing us to celebrate something bigger than ourselves. We invite you to take part in this celebration by maximizing your opportunity to build relationships with your Rho Gamma (recruitment guide), the women in all 13 chapters, and your fellow PNMs (potential new members).

Entering into the recruitment process is a privilege and therefore it is paired with a certain level of responsibility. We expect that each of our PNMs will treat each other and all of our sorority women with dignity, respect, and kindness. We have zero tolerance for comments or behavior that could be hurtful to any of our chapter members or PNMs.

Most importantly, we encourage you to be yourself and have fun! As you consider making this life-long commitment, take some time to reflect on your personal values and what you hope to gain while being in a sorority. This could range from enhancing your leadership skills and gaining a support system to expanding your network and challenging yourself to be a better person.

If you have any questions, please review our website at [www.tcupanhellenic.org](http://www.tcupanhellenic.org), as we believe that all of the information you need to be prepared for recruitment can be found there. If additional questions arise, please submit them on the question form found on the Contact page of [www.greeks.tcu.edu](http://www.greeks.tcu.edu).

We look forward to meeting you and providing you with guidance throughout this process! Please know that our staff is here for you as a resource and source of support during recruitment and beyond. We wish you the best of luck and encourage you to have an open mind and open heart throughout the week.

Interfraternally,

Devin Gregory  
Coordinator, Fraternity & Sorority Life

Brooke Scogin  
Director, Fraternity & Sorority Life

Dear Potential New Members,

On behalf of the Texas Christian University Panhellenic Community, welcome to TCU! Get ready for some of the best times of your life on one of the most exciting campuses in the country. I am so glad that you chose a university that is relationship oriented and committed to your success. We also wish to congratulate you on your decision to participate in Panhellenic Formal Recruitment. Get ready for a wild ride.

My name is Hannah Taylor and I have the honor of serving this community as the 2017 Panhellenic President. The rest of our Panhellenic Executive Board and I work to represent the interests of the 13 organizations at TCU who are part of the National Panhellenic Conference (NPC). With nearly 3,000 women, Panhellenic sororities collectively make up the largest female organization on campus. I am so thrilled that you are considering joining us!

Joining a Panhellenic sorority is undoubtedly one of the best decisions I have made in my life. Our organizations will not only provide you with a home away from home, but a support team, a group of cheerleaders, and a network of lifelong friends. Each of the 13 organizations excels in academic achievement, philanthropic service, and social involvement around campus. It is my hope for each of you that you fully embrace this experience and everything it may offer you.

I am thrilled for each one of you to create your own college experience, and I sincerely hope that it includes membership in one of our organizations. I also hope that you take full opportunity of everything this wonderful university has to offer. TCU is truly a one of a kind place and will invest in you as deeply as you invest in it. Enjoy this week, and know that if you stay true to whom you are, a home will be waiting for you.

Best,

Hannah Taylor  
Panhellenic President





Dear Potential New Member,

The TCU Panhellenic community and I would like to warmly welcome you to our campus, community, and Horned Frog Family! We are so excited that you have made the decision to participate in Formal Recruitment 2017. The decision to join a sorority is a commitment to scholarship, leadership, sisterhood, and philanthropy. Our Panhellenic community is constantly growing and evolving. All thirteen NPC sororities have brand new chapter facilities, so you will be the first Potential New Members to experience recruitment in them! Although this has been a major change, our chapters have maintained the core values and traditions that each were founded upon.

These organizations continue to facilitate the personal growth and development of their members as both leaders and students, while also giving back to the TCU community on an ongoing basis. Each organization is unique and offers a holistic experience that would benefit anyone lucky enough to join their sisterhood. It is our hope that you find a home not only within the Panhellenic community, but also in the Horned Frog community as well. So many young women will surround you throughout this process and you never know...they might be your future sisters!

Our community has steadily been moving toward Values-Based Recruitment. As you embark on this journey, it is my hope that you find a home away from home that reflects and strengthens the values you already hold dear. My biggest piece of advice for you this week is to keep an open mind and have a positive attitude. These are two major factors that will contribute to an enjoyable recruitment experience for you! The more you stay true to yourself and your values, the richer your time as an active member in this community will be.

Feel free to check out our website ([www.tcupanhellenic.org](http://www.tcupanhellenic.org)) to see all that Panhellenic life has to offer. If you have any questions or concerns regarding Formal Recruitment 2017, please do not hesitate to contact the Fraternity and Sorority Life Office at (817) 257-7281 or [www.greeks.tcu.edu](http://www.greeks.tcu.edu). We cannot wait to meet you as we continue to celebrate Fraternity and Sorority Life at Texas Christian University.

Go Greek and Go Frogs!

Sheridan Hawk, VP of Recruitment Operations

Alpha

Beta

Gamma

Delta

Epsilon

Zeta

Eta

Theta

Iota

Kappa

Lambda

Mu

Nu

Xi

Omicron

Pi

Rho

Sigma

Tau

Upsilon

Phi

Chi

Psi

Omega



# RECRUITMENT *Schedule*

**Saturday, August 12, 2017:**

**Pnm Move In, Parent Orientation, Pnm Orientation**

8:45am–12:00pm..... First Year Move In .....Main Campus  
5:00pm–5:45pm ..... Optional Parent Orientation.....Bluu Ballroom  
8:00pm–10:15pm..... Pnm Orientation.....Schollmaier Arena

**Sunday, August 13, 2017: Scholarship Day 1**

**Event Length: 20 Minutes, 10 Minutes Between Events**

11:00am–12:30pm..... Optional Lunch.....Market Square  
1:30pm–2:30pm..... Pnm Meeting .....Schollmaier Arena  
2:30pm–3:30pm..... Walk To Worth Hills And Line Up .....Worth Hills  
3:30pm–7:20pm..... Recruitment Events 1–8 .....Worth Hills  
7:20pm–8:20pm..... Pnm Quiet Time / Note Taking .....Bluu Ballroom

**Monday, August 14, 2017: Scholarship Day 2**

**Event Length: 20 Minutes, 10 Minutes Between Events**

9:00am–9:30am..... Pnm Meeting .....Schollmaier Arena  
9:30am–10:30am..... Walk To Worth Hills .....Worth Hills  
10:30am–12:20pm..... Recruitment Events 9–12 .....Worth Hills  
12:20pm–1:30pm..... Lunch.....Market Square / Kfc  
1:30pm–2:00pm..... Walk And Line Up.....Worth Hills  
2:00pm–3:50pm..... Events 13–16 .....Worth Hills  
3:20pm–6:50pm..... Selection Entry .....Schollmaier Arena

**Tuesday, August 15, 2017: Philanthropy Day 1**

**Event Length: 30 Minutes, 10 Minutes In Between Events**

9:00am–9:30am..... Pnm Morning Meeting .....Schollmaier Arena  
9:30am–10:30am..... Walk To Worth Hills/Line Up Pnms .....Worth Hills  
10:30am–12:20pm..... Events 1-3 .....Worth Hills  
12:20pm–1:30pm..... Pnm Lunch .....Market Square/Kfc  
1:30pm–2:00pm..... Walk To Worth Hills/Line Up Pnms .....Worth Hills  
2:00pm–4:30pm..... Events 4–7 .....Worth Hills  
7:20pm–8:20pm..... Pnm Quiet Time/Note Taking .....Bluu Ballroom

**Wednesday, August 16, 2017: Philanthropy Day 2**

**Event Length: 30 Minutes, 10 Minutes In Between Events**

9:00am–9:30am..... Pnm Morning Meeting .....Schollmaier Arena  
9:30am–10:30am..... Walk To Worth Hills/Line Up Pnms .....Worth Hills  
10:30am–12:20pm..... Events 8-10 .....Worth Hills  
12:20pm–1:30pm..... Pnm Lunch .....Market Square/Kfc  
1:30pm–2:00pm..... Walk To Worth Hills/Line Up Pnms .....Worth Hills  
2:00pm–4:30pm..... Events 11-14 .....Worth Hills  
11:40am–6:30pm..... Priority Preference Process.....Schollmaier Arena

**Thursday, August 17, 2017: Leadership**

**Event Length: 40 Minutes, 10 Minutes In Between Events**

7:45am–8:10am..... Pnm Morning Meeting .....Schollmaier Arena  
8:10am–9:00am..... Walk To Worth Hills/Line Up Pnms .....Worth Hills  
9:00am–12:10pm..... Events 1-4 .....Worth Hills  
12:10pm–1:20pm..... Pnm Lunch .....Market Square/Kfc  
1:20pm–1:50pm..... Walk To Worth Hills/Line Up Pnms .....Worth Hills  
1:50pm–6:40pm..... Events 5-10 .....Worth Hills  
3:20pm–7:30pm..... Priority Preference Process.....Schollmaier Arena

**Friday, August 18, 2017: Sisterhood / Preference**

**Event Length: 50 Minutes, 10 Minutes In Between Events**

12:30pm–1:00pm..... Pnm Morning Meeting .....Schollmaier Arena  
1:00pm–2:00pm..... Walk To Worth Hills/Line Up Pnms .....Worth Hills  
2:00pm–4:50pm..... Events 1-3 .....Worth Hills  
4:50pm–6:00pm..... Pnm Dinner.....Market Square/Kfc  
6:00pm–6:30pm..... Walk To Worth Hills/Line Up Pnms .....Worth Hills  
6:30pm–10:20pm..... Events 4-7 .....Worth Hills  
5:00pm–12:00am..... Priority Preference Process.....Bluu Ballroom

**Saturday, August 19, 2017: Day Off**

**Sunday, August 20, 2017: Bid Day**

2:30pm..... Pnm Meeting .....Bluu Ballroom  
3:00pm..... Open Bid Cards.....Bluu Ballroom



# IT'S ALL *Greek* TO ME

## Active Member:

An undergraduate sorority/fraternity member who has been initiated by her/his chapter and is in good standing with Texas Christian University and their national organization.

## Alumna/Alumnus:

An initiated member of a sorority or fraternity who has graduated or is no longer an active member of the collegiate chapter, but remains a member of the organization.

## Badge:

Pin worn by an initiated member.

## Bid:

A written invitation to join a sorority or fraternity. Women participating in Panhellenic Recruitment are able to receive one bid.

## Continuous Open Bidding (COB):

A process where bids may be extended and accepted any time during the school year other than during Formal Recruitment. A very limited number of women join a sorority through COB.

## Formal Recruitment:

A designated membership recruitment period comprised of a series of events hosted by each sorority or fraternity, scheduled and governed by the Council.

## Fraternity:

A values-based, social organization typically designated by Greek letters.

## Fraternity and Sorority Life (FSL):

Fraternity and Sorority Life is a department within the TCU Division of Student Affairs that advises the five governing councils: Interfraternity Council (IFC), Multicultural Greek Council (MGC), Independent Greek Council (IGC), National Pan-Hellenic Council (NPHC), and Panhellenic Council.

## Initiation:

A ceremony during which new members receive life-long membership privileges and become an active member of the organization.

## Legacy:

A woman whose mother, sister, and/or grandmother, is an alumna or active member of a National Panhellenic Conference sorority. Legacy status differs by organization.

## Membership Recruitment Acceptance Binding Agreement (MRABA):

A document each Potential New Member completes immediately following the Preference Round of events stating her membership preferences. The Potential New Member ranks the sororities she would accept a bid from,

listing the one which she most wants to join first and the other(s) in preferential order. This is a binding agreement, stating that the Potential New Member is willing to accept a bid from any sorority she lists. This agreement is binding until the next Formal Recruitment period at the institution.

## National Panhellenic Conference (NPC):

A conference composed of 26 women's inter/national organizations, each of which is autonomous as a social Greek-letter society of collegiate and alumnae members. TCU has 13 NPC sororities.

## New Member:

A woman who has accepted a bid from a Panhellenic Organization, but is not yet an initiated member.

## Panhellenic Executive Board:

The group of eight college women who oversee the Texas Christian University Council and give up their sorority association during the recruitment process to organize and assist the Potential New Members.

## Philanthropy:

An organization's designated cause to which they serve and/or raise money.

## Potential New Member (PNM):

Any woman interested in participating in Panhellenic Recruitment.

## Recommendation/Reference:

A written letter or statement from an alumna following her organization's guidelines introducing and recommending a Potential New Member for membership.

**Recruitment Counselors (Rho Gammas):** Panhellenic women carefully selected and trained to guide Potential New Members through the formal recruitment process. Rho Gammas dissociate from their respective chapters to remain completely neutral during the formal recruitment process.

## Single Intentional Preference:

Occurs when a Potential New Member attends more than one preference event but only lists one choice on her MRABA.



# 4 PILLARS *of* GREEK LIFE

## Scholarship

Academic excellence is a vital aspect of sorority membership at Texas Christian University. Scholastic standards are important for each chapter as well as the community as a whole. Programming, incentives, recognition and ongoing support help sorority members pursue academic success. Academic achievement is the reason students are at TCU, and each Panhellenic Organization has academic requirements and tools designed to help members be excellent students.

## Leadership

Developing leaders for life after college is an important part of Greek involvement. Sorority members participate in a variety of programs that provide leadership development. There are many ways to be a leader in TCU's Greek community, including chapter or council officer positions, national or regional leadership conferences, campus-based leadership opportunities, and committee involvement.

## Sisterhood

Joining a sorority is about building lifelong relationships that extend beyond ordinary friendships. Bonds of sisterhood are formed within an organization and provide TCU Greeks with a home away from home, mentorship, career networking, and a sense of community at a medium university. Sorority members enjoy connections that can provide support and celebration in life's significant moments.

## Service

Service is a meaningful pillar of fraternity and sorority involvement at TCU. It is perhaps the most personally rewarding of the pillars, as members are provided with opportunities to participate in hands-on volunteer work and implement philanthropic events to raise money for charitable organizations. The opportunities ensure that sorority members will have an impact on their community and develop lifelong habits of giving back.

# CIRCLE OF SISTERHOOD

## *Panhellenic's National Philanthropy*

In the mid 1800s in America, the women who founded our sororities stood together for the right to go to college, thus beginning a sorority movement. Now, almost 150 years later and more than 5 million strong, we vow to continue our Founders' legacy by standing together again to help girls and women go to school around the world.

Circle of Sisterhood is comprised of women, who have in common a college education. We know that access to quality schooling affords a better life for a woman and that of her family. For too many girls and women around the world, access to quality education is often limited. And education is the answer to many of the global issues related to women - poverty, oppression, misogyny, brutality. Ultimately, more and more educated girls will mean stronger and healthier villages, communities and entire countries.

"One person can make a small difference. But as a community of 5 million sorority women, our collective efforts will be transforming for generations to come" -Ginny Carroll (Founder of Circle of Sisterhood)

So far, TCU sorority members have raised \$50,000 for COS. In 2016, our members attended the Circle of Sisterhood Trek to Nicaragua. They built a school and shelter for the entire community where they lived for a week. Each TCU sorority is currently raising funds in order to attend another Circle of Sisterhood Trek in 2018 or 2019 to help another community around the world have access to education. This is an experience that you will have the chance to apply for if you join one of our 13 amazing chapters!





# PANHELLENIC Council

NPC, founded in 1902, is the encompassing organization for 26 inter/national women's fraternities and sororities. Each member group is autonomous as a social, Greek-letter society of college women and alumnae. Members are represented on more than 600 college and university campuses throughout the United States and Canada and in more than 5,300 alumnae associations, making up more than 3 million sorority women in the world.

When you join one of the thirteen National Panhellenic Conference (NPC) sororities at TCU, you also become a member of the Panhellenic Council. The TCU Panhellenic Council is the umbrella organization for the NPC sororities chartered at TCU and is responsible for organizing activities of mutual concern and interest to all the sororities on campus.

## CHAPTER PRESIDENTS



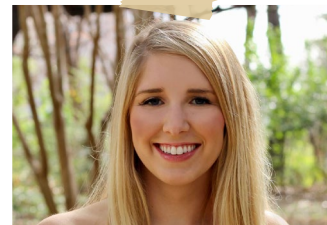
*Jenna Roberts*  
Alpha Chi Omega



*Caroline Stebbins*  
Alpha Delta Pi



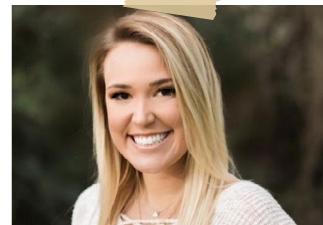
*Elizabeth Holman*  
Alpha Omicron Pi



*Katie Tetrick*  
Chi Omega



*Deery Brooks*  
Delta Delta Delta



*Maddie Madill*  
Delta Gamma



*Kennedy Wilson*  
Gamma Phi Beta



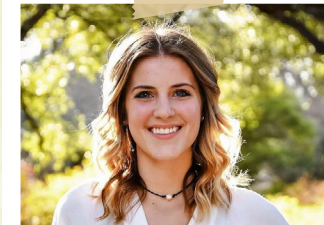
*Colleen Coffey*  
Kappa Kappa Gamma



*Charlee Bisch*  
Sigma Kappa



*Shelby Spruiell*  
Kappa Alpha Theta



*Christine Clutterbuck*  
Pi Beta Phi



*Lindsey Thompson*  
Zeta Tau Alpha



*Bailey Eschle*  
Phi Mu



# PANHELLENIC *Creed*

We, as Undergraduate Members of women's fraternities, stand for good scholarship, for guarding of good health, for maintenance of fine standards, and for serving, to the best of our ability, our college community. Cooperation for furthering fraternity life in harmony with its best possibilities, is the ideal that shall guide our fraternity activities. We, as Fraternity Women, stand for service through the development of character inspired by the close contact and deep friendship of individual fraternity and Panhellenic life. The opportunity for wide and wise human service, through mutual respect and helpfulness, is the tenant by which we strive to live.



2017 Panhellenic Council Delegates

*adventure*  
-AWAITS-





# PANHELLENIC *Executive Board*



Texas Christian University Panhellenic Council Executive Board is comprised of eight women from different chapters in TCU's Panhellenic community. Each woman is elected for a specific position that benefits the Panhellenic community. The Executive Board holds weekly council meetings with representatives from each chapter in order to collaborate on matters such as upcoming events, recognizing chapter accomplishments, and integrating with the larger Greek community and TCU as a whole. Lastly, the Executive Board serves as the recruitment team for formal recruitment.

# RECRUITMENT GUIDES *Rho Gammas*



Rho Gammas are Panhellenic women selected by the Executive Board who disassociate from their chapters in order to help PNM's through the recruitment process as unbiased listeners and friends. Rho Gammas are selected through an application and interview process based on leadership abilities, counseling skills, and passion for the Panhellenic community. Approximately 70 women are chosen each spring for the honor of being a Rho Gamma.



# PANHELLENIC Potential New Member *Bill of Rights*

## You have:

- The right to be treated as an individual
- The right to be fully informed about the recruitment process
- The right to ask questions and receive true and objective answers from recruitment counselors and members
- The right to be treated with respect
- The right to be treated as a capable and mature person without being patronized
- The right to ask how and why and receive straight answers
- The right to have and express opinions to Rho Gammas
- The right to have inviolable confidentiality when sharing information with Rho Gammas
- The right to make informed choices without undue pressure from others
- The right to be fully informed about the NPC Unanimous Agreements implicit in the membership recruitment acceptance binding agreement (MRABA) signing process
- The right to make one's own choice and decision and accept full responsibility for the results of that decision
- The right to have a positive, safe and enriching recruitment and new member experience



*The*  
*Journey*  
**OF A THOUSAND**  
*MILES*  
*BEGINS WITH*  
*one*  
*» step «*



# RECRUITMENT *at a Glance*

## Round One & Round Two (Day 1,2,3, and 4)

August 13<sup>th</sup> – August 16<sup>th</sup>

### Round One (Day 1, and 2)

- **Topic:** Scholarship
- **Goal:** Discover how the chapter promotes Scholarship and supports members with their educational goals. Share your educational experiences and goals.
- **What to Expect:** You will visit all 13 chapters with your Rho Gammas and recruitment group. Make sure to take detailed notes after each event so you can differentiate between chapters when making your selections. This round will have the shortest in-house time, and thus the shortest conversations, so make sure to ask any questions you may have. You may talk to more than one active member during this round. Expect loud cheering when entering and exiting!

### Round Two (Day 3, and 4)

- **Topic:** Service
- **Goal:** Discover how the chapter promotes service in our community and which philanthropy they focus on. Feel free to share any high school community service experiences you have and what you hope to do throughout college.
- **What to Expect:** For Round Two, each PNM will receive an individual schedule in morning meeting. A PNM can visit up to 10 chapters, but it is rare to have a full schedule. You must attend every

event on your schedule, otherwise you will face removal from the recruitment process. Since each schedule is individualized, you will be traveling on your own; however, Rho Gammas will be stationed throughout Worth Hills to help direct you to where you need to be.



**Round One & Round Two attire:** You will receive T-shirts for these rounds at PNM Orientation; bring any cute bottoms like cute shorts or a skirt to wear as bottoms

## Round Three (Day 5)

August 17<sup>th</sup>

### Topic: Leadership

**Goal:** Discover how the chapter exhibits leadership within their organization, on campus, and in the Fort Worth Community. Are the members involved in outside organizations with leadership opportunities you are interested in? Share any high school leadership experience you have and how you hope to develop as a leader in college.

**What to Expect:** For Round Three, each PNM will receive another individualized schedule. A PNM can visit up to 7 chapters, but it is rare to have a full schedule. Some chapters may play videos, slideshows, or give house tours.



**Round Three attire:** Sundress, cute shirt and shorts, cute shirt and skirt, and sandals or wedges



### Round Four (Day 6)

August 18<sup>th</sup>

- **Topic:** Sisterhood / Preference
- **Goal:** Evaluate how you feel in the chapter; are these the women you want to spend your college career with? Do they value what you value? Do they laugh at what you laugh at? Do you want to call these women your sisters? Do you find yourself sad to leave? Is this your home?
- **What to Expect:** Each PNM will receive an individualized schedule, and can visit up to 3 chapters. Attendance at all events is mandatory to remain eligible in the recruitment process. This round tends to be sentimental for active members, especially seniors. Songs tend to be quieter and emotions tend to be heightened. It is very important to talk to your Rho Gammas about any concerns you have before you leave Worth Hills for preferencing, as there is a strict silence policy from the time you sign the membership recruitment acceptance binding agreement (MRABA) until bid distribution.



Round Four attire: most dressy round; nice dress and heels or wedges

### BID DAY!!

August 20<sup>th</sup>

- **What to Expect:** You will arrive and find your Recruitment group. Your Rho Gammas will hand you an envelope containing your bid card. After a few words from members of our Panhellenic Community and Rho Gamma reveal, you will open your envelope to find your new home! After you meet your New Member Class, you will run to the commons where your new sisters will be waiting!
- Run home! (Don't trip!)



Bid Day attire: wear cute and comfortable bottoms with a white shirt or tank that will go underneath a new Bid Day shirt



# THINGS to Remember

## What Not To Wear

**WATCHES:** Out of respect for our active chapter members, we ask that you do not wear watches at any time during recruitment. This includes fitbits and smart watches. This is to make sure that you aren't unintentionally checking the time during an event. Don't worry about keeping time - all of our recruitment staff including Rho Gammas and Recruitment Team will make sure to keep you on schedule!

**CELL PHONES:** Leave your cell phones in your Residence Hall! Leaving your phone behind ensures that you will have ample time to interact and befriend other PNMs. This will also allow for you to make decisions by yourself, without confiding with anyone via text. If, for some reason, an emergency arises and you need to contact your family, we will work to get you access to a phone based on your individual needs.

**PURSES:** There is no need to bring your purse to the chapters during recruitment. We provide every PNM with a clear plastic bag that will remain under the tent while you are inside the chapters. You will be able to store any make-up, hair brushes, or mints in your plastic bag! A Rho Gamma in each group and at each station will have a backpack for anything else that you might need.

**PERFUME:** With so many women in one small space, a huge cloud of different perfumes can be very overwhelming. Ditch the perfume, but don't hesitate to wear deodorant!



## RECRUITMENT ADVICE

### 10 Things We Wish We Would've Known About Recruitment

1. No one has a perfect schedule. Schedules vary by person and are a reflection of your individuality. It is common not to have a full schedule.
2. Each day is a new day. The chapter that you loved one day might not be your favorite the next. Just because you didn't enjoy a chapter at the beginning of the week doesn't mean you should rule them out completely. There is a reason they still want you to attend events!
3. The chapter women are just as nervous about talking to you as you are about talking to them!
4. Be yourself and respond to questions naturally. The more genuine your answers are, the better the chapters will get to know you and the better you get to know the chapters.
5. Look for the women who share similar values as you, not the women you want to be or look like!
6. Stay true to yourself. The harder you try to be like the women in the chapter you are attending an event at, the harder it will be for you to find your perfect fit.
7. Dress in what makes you feel comfortable. Don't try to wear a new outfit, shoes, or hairstyle the day of an event. The more confident you are in your appearance, the more your genuine personality will shine through.
8. Wear comfortable shoes, bring a hair tie, and know that you will sweat a little. But don't worry, everyone is in the same boat, even the chapter members.
9. Don't believe everything you hear. Rumors are rumors for a reason, they aren't always true. Make your decision based on your experience with the chapter, everything else will fall into place.
10. Throughout this whole process, remember that this is YOUR recruitment and YOUR decision - not your mom's or sister's or roommate's or anyone else's.



# FAQs

## Which sororities are on TCU's campus?

Alpha Chi Omega, Alpha Delta Pi, Alpha Omicron Pi, Chi Omega, Delta Delta Delta, Delta Gamma, Gamma Phi Beta, Kappa Alpha Theta, Kappa Kappa Gamma, Phi Mu, Pi Beta Phi, Sigma Kappa, and Zeta Tau Alpha.

## What does it mean if I am a legacy?

Legacy status with a chapter does not in any way guarantee a bid or an invitation to any round of recruitment. However, chapters are aware if a PNM is a legacy and may consider this when choosing who to invite to events. Being a legacy of one chapter does not have an impact on your invitations to other chapters.

## What does accepting a bid entail?

Accepting a bid means that you sign a Membership Recruitment Acceptance Binding Agreement (MRABA) stating that you are willing to become a member of any of the chapters you list. Once you sign an MRABA, you are ineligible to pursue membership with any other organization for one calendar year.

## What are my chances of getting a bid?

Bids are not guaranteed at any point during recruitment. We strongly encourage all PNMs to keep an open mind throughout the process and maximize your options. If you are nervous about receiving a bid, you can talk with your Rho Gamma and she can help you better understand the process.

## Can I still be involved in other things on campus if I am in a sorority?

Absolutely!! Sorority women are some of the most involved on campus and many chapters require members to be involved in at least one other registered student organization. Most Panhellenic women serve as leaders in these organizations as well.

## What does it mean to maximize my options?

At the end of each day, you will have the opportunity to rank and cluster the chapters you visited in preferential order. (This will be explained to you in more detail during the process). For the first three rounds of recruitment, you **MUST** list every chapter that you have visited that day. Once you have attended preference round, we do not require you to list every chapter that you have visited that round; however, if you do list every chapter and maximize your options, you are more likely to receive a bid from one of the chapters that you have listed. For example, if you have visited three chapters on preference round and you list each, you will have maximized your options. Conversely, if you only list two, you will not have maximized your options and receiving bid is not as certain.

## How much time does being in a sorority take?

Being a member of a sorority is a responsibility, and like most responsibilities, it takes time. While the amount of time you need to dedicate to the chapter may vary with your level of involvement, all members will be required to attend weekly chapter meetings, service-based events, ritual events, and have the option to attend social events. Most New Member classes are required to attend additional meetings to learn more about the organization. Your experience will not be as meaningful without commitment to these expectations. They will bond you more closely to your sisters and your organization.



# RECRUITMENT

## How it Works

### MUTUAL SELECTION

1. At the end of each round, you will cluster your most preferred chapters you wish to return to the next day and you will rank your least preferred chapters.
2. Each chapter will also submit their selections at the end of each round.
3. PNM and Chapter selections are then matched and you will receive your individualized schedule every morning.

### MRABA

1. If you receive invitations to Preference, at the conclusion of your last Preference event, you will make your final selections, ranking the chapters you visited in preferential order. Once you complete your rankings, you will sign a copy of the MRABA. Please note that once the MRABA has been turned in to a representative of TCU Panhellenic, it cannot be altered or changed.
2. MRABA stands for Membership Recruitment Acceptance Binding Agreement, which is formerly known as a "Preference Card." The MRABA is a binding agreement that is affective for one calendar year. By signing this document, you, as a Potential New Member, agree that you are willing to accept a bid for membership from any sorority that you ranked on your MRABA. You are then bound to an organization until the next Formal Recruitment. Most importantly, if you receive a bid from any sorority that you have listed on your MRABA, and you choose not to accept it, you are not eligible to participate in Continuous Open Bidding (COB) in fall 2017 or spring 2018. However, you will be eligible to participate in the next Formal Recruitment in Fall 2018.

3. Prior to signing the MRABA, you will have several options to consider and we suggest that you thoroughly reflect on these before signing your MRABA.
  - First and foremost, you may choose not to complete the MRABA, thereby withdrawing from recruitment. If you choose this option, you are eligible to accept a bid for membership from any sororities participating in COB. A small number of chapters may be able to recruit a limited number of women through the COB process after formal recruitment if their chapter is below Panhellenic total; however, this is rare and not guaranteed.
  - Secondly, you may choose to list any sorority whose preference event you attended and from whom you are willing to accept an invitation to membership (a bid).
  - Lastly, you may choose to list only one or two preferences, but you must understand that if you choose to single intentional preference then you are not guaranteed to receive a bid for membership.



# RECRUITMENT *Expectations*

## PNM EXPECTATIONS

- PNMs are expected to attend all events on their daily schedule
- PNMs are expected to be on time to all events and meetings
- PNMs are expected to maintain an open-mind and positive attitude throughout the whole recruitment process
- PNMs are expected to speak kindly about all chapters at TCU
- PNMs are expected to stay true to themselves and their values throughout this process
- PNMs are expected to attend all Frogs First activities
- PNMs are expected to follow all NPC Unanimous Agreements detailed by your Rho Gammas
- PNMs are expected to hold each other accountable
- PNMs are expected to wear their Go Greek button when not in recruitment rounds
- PNMs are expected to show respect towards any and all Panhellenic chapters and chapter members
- PNMs are expected to BRING A PAIR OF CLOSED TOE SHOES EVERYDAY

## CHAPTER EXPECTATIONS

- Chapters are expected to follow all NPC Unanimous Agreements and TCU Panhellenic Recruitment Bylaws and recruitment Code of Ethics
- Chapters are expected to treat all PNMs and fellow Panhellenic chapter members with respect
- Chapters are expected to recognize friendly relations with all collegiate women, both sorority members and non-members, realizing the importance of creating and building friendships
- Chapters are expected to be positive representations of the TCU Panhellenic community
- Chapters are expected to leave the PNM with a positive idea of what sisterhood could be

# VIOLATION OF RULES

## If you need to file a violation, here is what you do:

Do your best to get specific details, names, exact wording, and setting. The more detail, the better.

Do not spread the details to everyone. Speak with individuals that can help solve the problem and prevent future situations like this. Talk to your Rho Gamma, any Panhellenic Executive officer, a Fraternity & Sorority Life staff member, or email [tcupanhellVPRO@gmail.com](mailto:tcupanhellVPRO@gmail.com) (the Vice President of Recruitment Operations). Do not think your chances of receiving a bid will be hindered by this. Be confident that you are doing the right thing! This will help prevent future unethical behavior in our community.

If you don't feel comfortable filing a violation in person, you can report it anonymously by calling the Parent and PNM Hotline (Opened at beginning of Recruitment): (817) 257 - 7281

**\*NOTE: If you are unaware if something is a violation, please call and we can figure it out together.**  
**Common Violations include: Chapters contacting PNMs during the summer, or any Chapter member contacting PNMs outside of Recruitment Events.**



it's  
time  
to start  
something  
new





# Alpha Chi Omega

## Notes

I liked \_\_\_\_\_

I disliked \_\_\_\_\_

I met \_\_\_\_\_

Something interesting \_\_\_\_\_



# AXΩ

Founded:  
Oct. 15, 1885

Open Motto:

*Together let us seek  
the heights.*

Philanthropy:

Domestic Violence Awareness

Chapter Avg. GPA 3.459

New Member Dues \$1,180

Active Dues per Semester \$600

Flower:  
Red Carnation



Colors:  
Scarlet, Olive



Symbol:  
Lyre



[tcualphachiomega.wordpress.com](http://tcualphachiomega.wordpress.com)

Alpha Chi Omega's Iota Lambda chapter at Texas Christian University was founded on March 2, 1991. Our chapter raised the most money for our philanthropy out of all of the other Alpha Chi Omega chapters in the nation



# Alpha Delta Pi

## Notes

I liked \_\_\_\_\_

I disliked \_\_\_\_\_

I met \_\_\_\_\_

Something interesting \_\_\_\_\_



Α Δ Π

**Founded:**  
May 15, 1851

**Open Motto:**  
*We live for  
each other.*

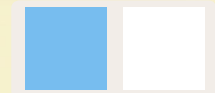
**Philanthropy:**  
Ronald McDonald House Charities

**Chapter Avg. GPA** 3.512

**New Member Dues** \$1,038

**Active Dues per Semester** \$681

**Colors:**  
Azure Blue, White



**Flower:**  
Woodland Violet



**Symbol:**  
Lion



[www.tcuadpi.com](http://www.tcuadpi.com)

"I know that I can handle whatever life throws at me because I'll never have to do it alone thanks to the women of Alpha Delta Pi. I would go to the ends of the earth and back for my sisters, and I know they would do the same for me."- Kelly Danford PC '15



# Alpha Omicron Pi

## Notes

I liked \_\_\_\_\_

I disliked \_\_\_\_\_

I met \_\_\_\_\_

Something interesting \_\_\_\_\_



# ΑΟΠ

**Founded:**  
Jan. 2, 1897

**Open Motto:**

*One motto, one badge, one bond,  
and singleness of heart.*

**Philanthropy:**

American Juvenile Arthritis Organization

**Chapter Avg. GPA 3.373**

**New Member Dues**

Fall: \$825.11 Spring: \$786.01

**Active Dues**

Fall: \$820.60 Spring: \$690.01

**Colors:**  
Cardinal



**Flower:**  
Jacqueminot Minot Rose



**Symbol:**  
Ruby



[www.aoiitcu.com](http://www.aoiitcu.com)

*Our 2016 Jingle Bell Run team benefitting the  
arthritis foundation raised over \$4000 and  
was the largest team at the event!*



# Chi Omega

## Notes

I liked \_\_\_\_\_

I disliked \_\_\_\_\_

I met \_\_\_\_\_

Something interesting \_\_\_\_\_



XΩ

Founded:  
Apr. 5, 1895

Open Motto:  
*Hellenic Culture and  
Christian Ideals*

Philanthropy:  
Make-A-Wish Foundation

Chapter Avg. GPA 3.525

New Member Dues \$670

Active Dues per Semester \$545

Colors:  
Cardinal, Straw



Flower: White Carnation      Symbol: Skull & Crossbones



[www.tcuchiomega.com](http://www.tcuchiomega.com)

"Choose Joy" -Taylor Helland



# Delta Delta Delta

## Notes

I liked \_\_\_\_\_

I disliked \_\_\_\_\_

I met \_\_\_\_\_

Something interesting \_\_\_\_\_



In 2016, our chapter raised over \$85,000 for our national philanthropic partner St. Jude Children's Research Hospital and over \$102,500 for our local Cook Children's Medical Center.



**Founded:**  
Nov. 27, 1888

**Open Motto:**  
*Let us steadfastly love  
one another.*

**Philanthropy:**  
St. Jude Children's Research Hospital  
and Cook Children's Medical Center

**Chapter Avg. GPA 3.3**

**New Member Dues \$1,400**

**Active Dues per Semester \$605**

**Colors:**  
Silver, Gold, Cerulean Blue



**Flower:**  
Pansy



**Symbol:**  
Dolphin



[www.tcutridelta.com](http://www.tcutridelta.com)



# Delta Gamma

## Notes

I liked \_\_\_\_\_

I disliked \_\_\_\_\_

I met \_\_\_\_\_

Something interesting \_\_\_\_\_

We raised just over \$10,000 for Service for Sight with our annual Anchorbowl in the fall and in the spring we hosted Olympic gold medalist, Shawn Johnson, on campus!



ΔΓ

Founded:  
Dec. 25, 1873

Open Motto:  
*Do Good.*

Philanthropy:  
Service for Sight

Chapter Avg. GPA 3.415

New Member Dues \$1,936.15

Active Dues per Semester \$679.58

Colors:  
Bronze, Pink, Blue



Flower:  
Cream Colored Rose



Symbol:  
Anchor



[www.deltagamma.org](http://www.deltagamma.org)



# Gamma Phi Beta

## Notes

I liked \_\_\_\_\_

I disliked \_\_\_\_\_

I met \_\_\_\_\_

Something interesting \_\_\_\_\_



# ΓΦΒ

**Founded:**  
Nov. 11, 1874

**Open Motto:**  
*Founded upon a rock.*

**Philanthropy:**  
Girls on the Run

**Chapter Avg. GPA** 3.489

**New Member Dues** \$950

**Active Dues per Semester** \$575

**Colors:**

Brown, Mode, Pink



**Flower:**  
Pink Carnation



**Symbol:**  
Crescent Moon



[www.tcugammaphibeta.com](http://www.tcugammaphibeta.com)

Gamma Phi Beta coined the word "sorority" known among women, all others at the time were called fraternities.



# Kappa Alpha Theta

## Notes

I liked \_\_\_\_\_

I disliked \_\_\_\_\_

I met \_\_\_\_\_

Something interesting \_\_\_\_\_

*Kappa Alpha Theta is the first Greek  
fraternity known among women.*



# KAΘ

**Founded:**  
Jan. 27, 1870

**Open Motto:**  
*Leading Women*

**Philanthropy:**  
Court Appointed Special  
Advocates (CASA)

**Chapter Avg. GPA** 3.579

**New Member Dues** \$837

**Active Dues per Semester** \$737

**Colors:**  
Black, Gold



**Flower:**  
Black, Gold Pansy



**Symbol:**  
Kite



[www.tcutheta.com](http://www.tcutheta.com)



# Kappa Kappa Gamma

## Notes

I liked \_\_\_\_\_

I disliked \_\_\_\_\_

I met \_\_\_\_\_

Something interesting \_\_\_\_\_



# KKΓ

Founded:  
Oct. 13, 1870

Open Motto:  
*Aspire to be.*

Philanthropy:  
Reading is Fundamental(RIF)  
Chapter Avg. GPA 3.363  
New Member Dues \$757  
Active Dues per Semester \$481

Colors:  
Dark Blue, Light Blue



Flower:  
Fleur-de-lis



Symbol:  
Key



[www.tcu.kappa.org](http://www.tcu.kappa.org)

Kappa Kappa Gamma was founded by six women and is one of the oldest and largest Greek organizations still functioning today.



# Pi Beta Phi

## Notes

I liked \_\_\_\_\_

I disliked \_\_\_\_\_

I met \_\_\_\_\_

Something interesting \_\_\_\_\_



Pi Beta Phi was the first women's fraternity to be modeled on the men's groups and the first to start a chapter at another college.



ΠΒΦ

Founded:  
Apr. 28, 1867

Open Motto:

*Follow your arrow wherever it  
points/ /With brave wings she flies*

Philanthropy:

Read. Lead. Achieve.

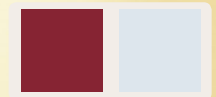
Chapter Avg. GPA 3.398

New Member Dues \$689

Active Dues per Semester \$581

Colors:

Wine, Silver, Blue



Flower:

Wine Carnation

Symbol:

Arrow



[www.pibetaphi.org/pibetaphi/tcu](http://www.pibetaphi.org/pibetaphi/tcu)



# Phi Mu

## Notes

I liked \_\_\_\_\_

I disliked \_\_\_\_\_

I met \_\_\_\_\_

Something interesting \_\_\_\_\_



With members from 27 different states, 5 different countries, and 45 different majors, TCU Phi Mu prides itself on our diverse, vibrant women.



Φ M

**Founded:**  
Mar. 4, 1852

**Open Motto:**  
*The Faithful Sisters.*

**Philanthropy:**  
Children's Miracle Network  
**Chapter Avg. GPA** 3.324  
**New Member Dues** \$997  
**Active Dues per Semester** \$441.81

**Colors:**  
Rose, White



**Flower:**  
Rose Carnation



**Symbol:**  
Quatrefoil



[www.tcu.phimu.org](http://www.tcu.phimu.org)



# Sigma Kappa

## Notes

I liked \_\_\_\_\_

I disliked \_\_\_\_\_

I met \_\_\_\_\_

Something interesting \_\_\_\_\_



Founded:  
Nov. 9, 1874

Open Motto:  
*One heart, one way.*

Philanthropy:  
Alzheimer's Disease Research

Chapter Avg. GPA 3.378

New Member Dues \$1,138

Active Dues per Semester \$633

Colors:  
Maroon, Lavender



Flower:  
Wild Purple Violet



Symbol:  
Heart, Dove



The Alzheimer's Association has adopted the color purple as their official color due to the support and dedication of Sigma Kappa Sorority.

[www.tcu.sigmakappa.org](http://www.tcu.sigmakappa.org)



# Zeta Tau Alpha

## Notes

I liked \_\_\_\_\_

I disliked \_\_\_\_\_

I met \_\_\_\_\_

Something interesting \_\_\_\_\_



# ZTA

**Founded:**

Oct. 15, 1898

**Open Motto:**

*Seek the Noblest*

**Philanthropy:**

Breast Cancer Education and Awareness

**Chapter Avg. GPA 3.44**

**New Member Dues**

Fall: \$771 Spring: \$839

**Active Dues**

Fall: \$506 Spring: \$551

**Colors:**

Turquoise and Steel Gray



**Flower:**

White Violet



**Symbol:**

Crown



Another Chapter Symbol  
is Strawberries.

[www.tcuzetataualpha.com](http://www.tcuzetataualpha.com)



## Multicultural Greek Council

### Chi Upsilon Sigma



### Lambda Theta Alpha



## Independent Greek Council

### Sigma Phi Lambda



### Tau Beta Sigma



## National Pan-Hellenic Council

### Kappa Lambda Delta



### Sigma Lambda Alpha



### Alpha Kappa Alpha



### Delta Sigma Theta



### Sigma Gamma Rho





# STAY Connected

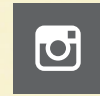
Stay connected year round with TCU Panhellenic! We upload and share pictures of our women doing amazing things around the community. We also have social media competitions you don't want to miss out on. Stay connected by following us on the links below! Use, #TCURecruitment2017 to join the conversation!



@TCUPanhellenic



TCUPanhellenic



TCUPanhellenic



TCUPanhellenic

[www.tcupanhellenic.org](http://www.tcupanhellenic.org)



STUDENT AFFAIRS

Fraternity & Sorority Life

[greeks.tcu.edu](http://greeks.tcu.edu)  
817-257-7281

## WORTH HILLS MAP





Ordering shirts should be a peaceful process

Contact  
katie@getsomегreek.com  
to start on your  
chapter's next order!



getsomегreek  
greek fashion.

# SWEAT THERAPY IS IN SESSION



Find your tribe. Find your ride. Find your Y.

Your first ride is FREE. Ask us  
about our student discount.



@zyn22\_  
ZYN22studio  
@zyn22\_

3236 West 7th Street | 817.778.4133 | West7th@ZYN22.com

We are  
always adding  
New Art  
&  
Apparel!



geneologie.  
Licensed with TCU



custom shirts. simplified.



geneologie.com



BROWN BAG ETC.



sorority & fraternity  
gifts and apparel

**TCU**

Great Greek Gifts!

Sororities - Fraternities - custom orders

## TCU Bid Day Event

Shop for Bid Day gifts and  
enjoy **STEELCITYPOPS**  
at the store.

**August 20<sup>th</sup>**

Noon - 5:00pm

2912 Pulido St

Fort Worth, TX 76107

### Recruitment Store Hours:

August 19<sup>th</sup> 10:00am - 5:00pm

August 20<sup>th</sup> 10:00am - 10:00pm

August 21<sup>st</sup> 10:00am - 7:00pm

August 22<sup>nd</sup> 10:00am - 6:00pm

Delivery to sorority houses  
available August 21<sup>st</sup>